

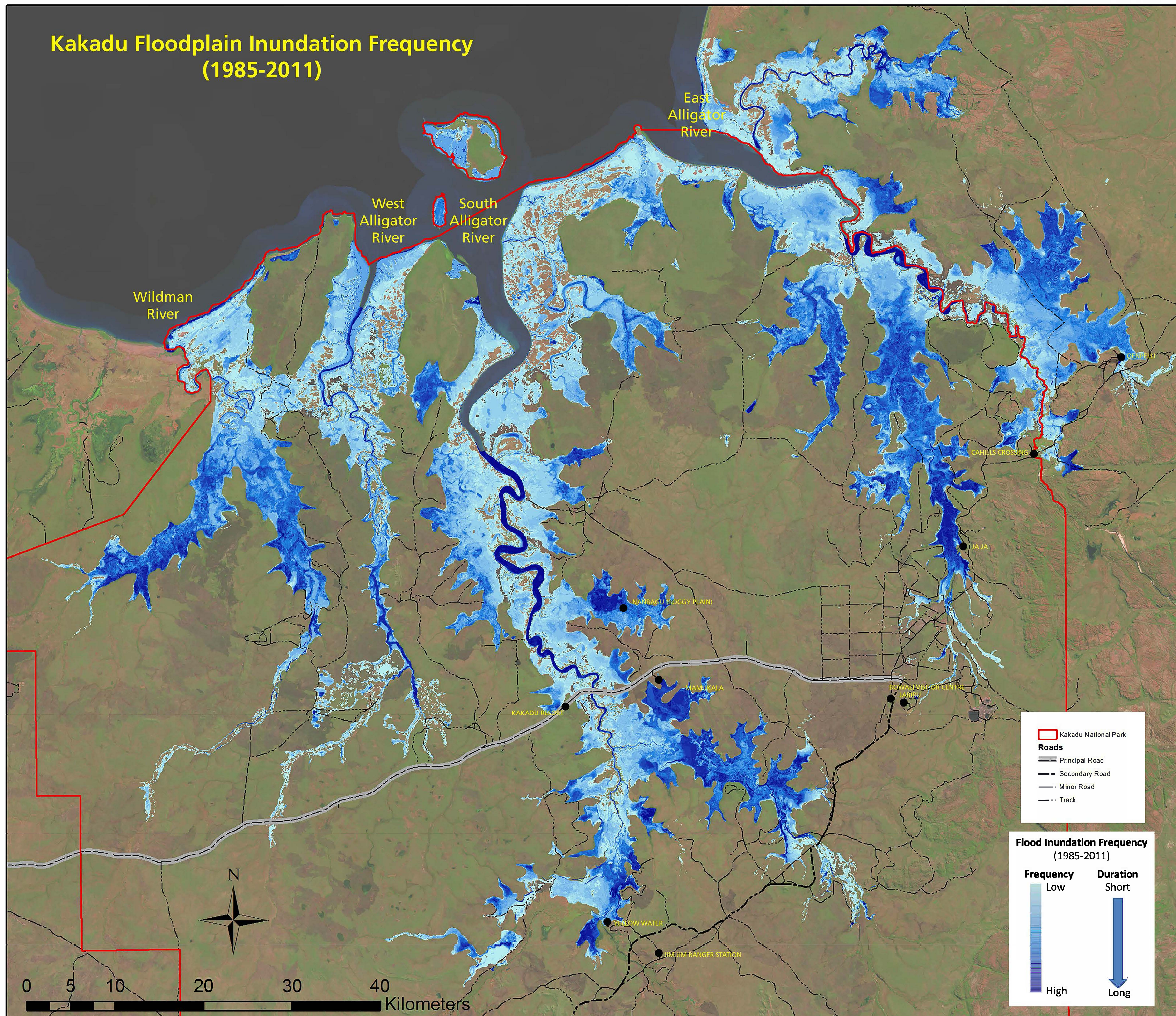
Kakadu Floodplain Inundation Frequency (1985-2011)

This map shows the areas on the Alligators Rivers Region floodplain that flood in blue.

The darker the blue, the longer the area is inundated.

While the pale blue areas flood, they are the first to drain when flooding recedes.

This information was derived from satellite images taken three times per years, in six different years, between 1985 and 2011.



This project received funding from the Australian Government's National Environmental Research Program