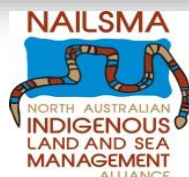


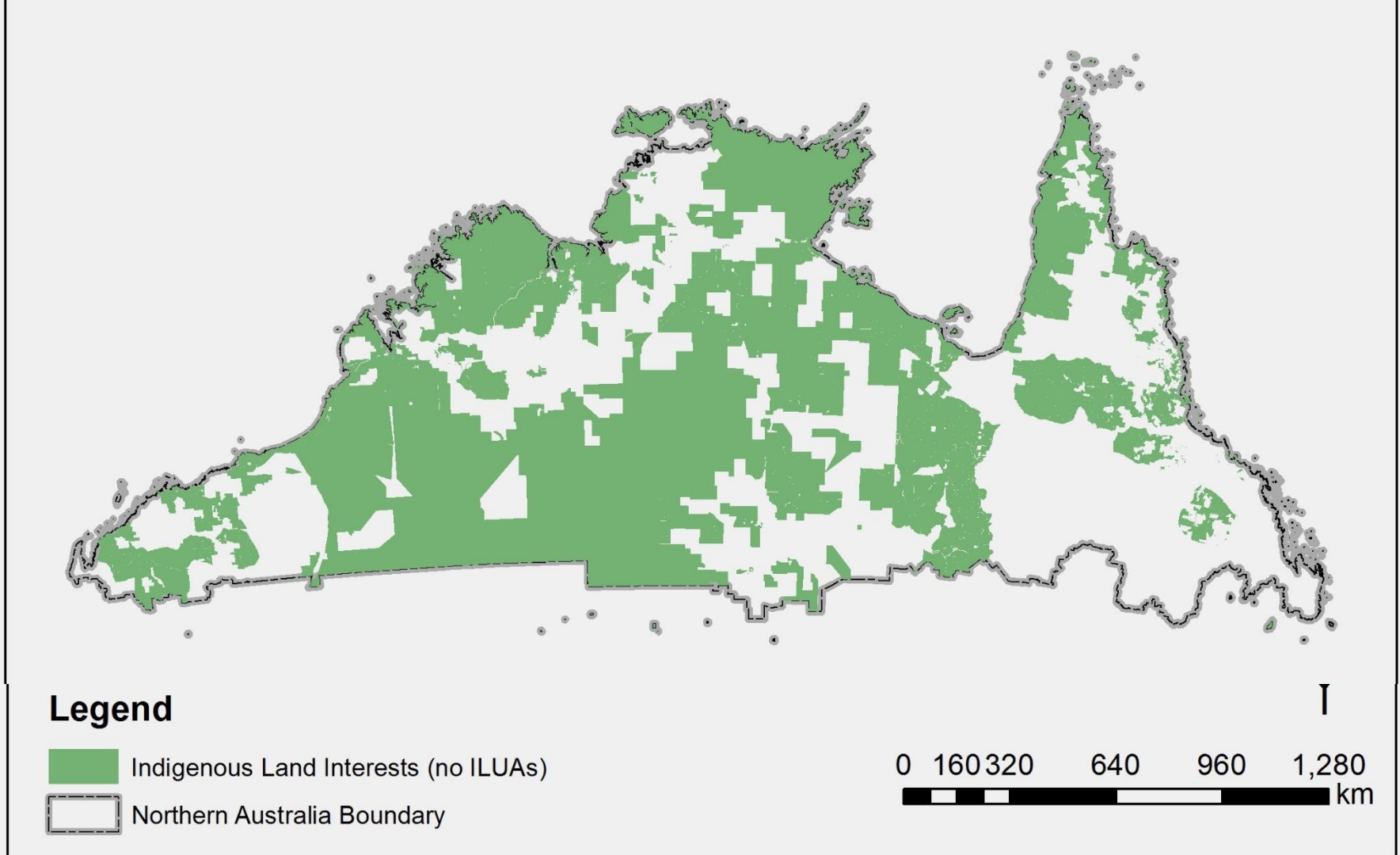
Knowledge brokering with Indigenous land managers to support informed decisions



Ro Hill, Melissa George, Pethie
Lyons, Natalie Raisbeck-Brown

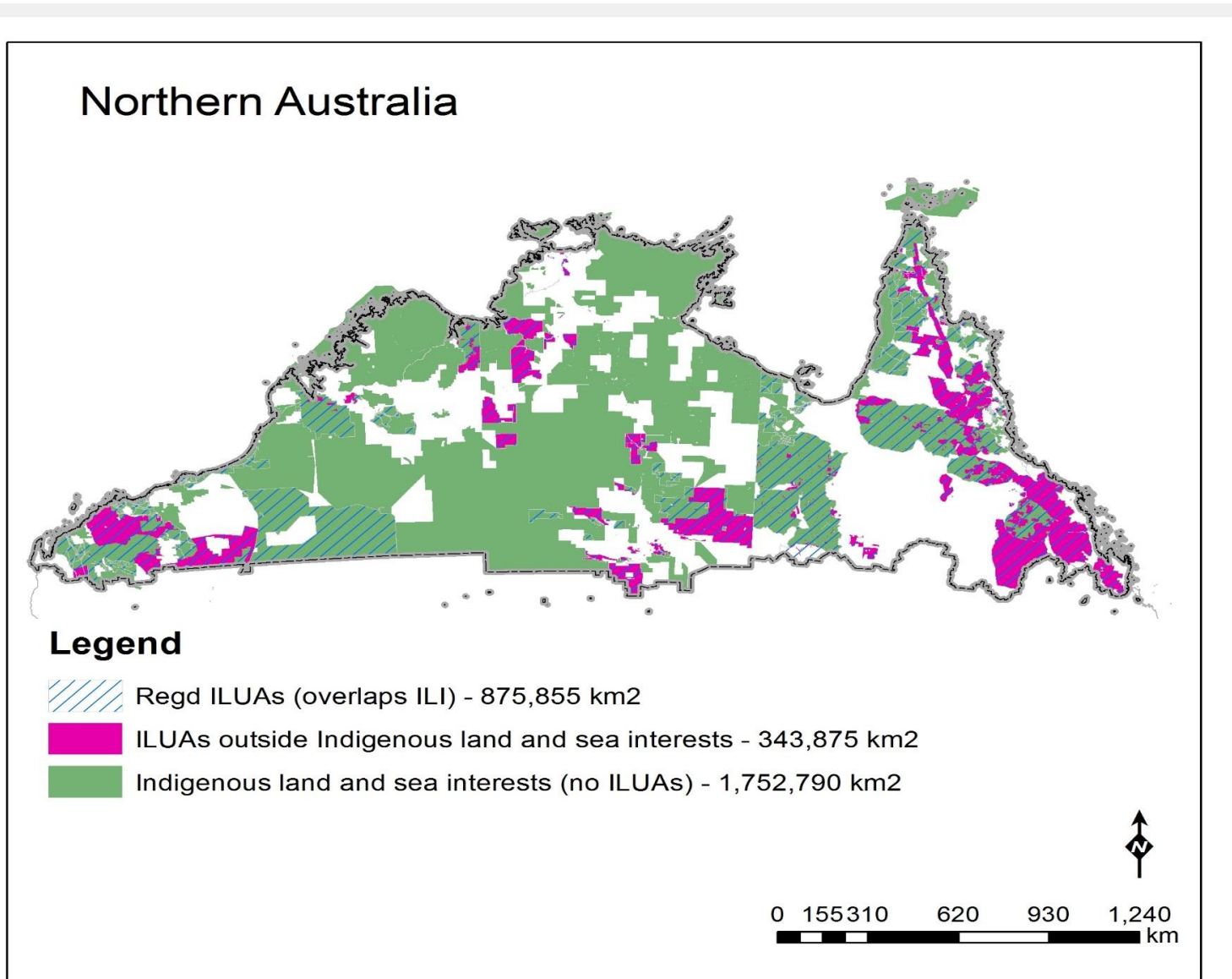


National Environmental Science Programme



Indigenous land interests: 57.6% of northern Australia

68.9% with Indigenous Land Use Agreements



Co-developed research

- Five priority topics for Indigenous land managers: better co-research models; economic valuation, knowledge brokering, sustainable enterprises, impact assessment

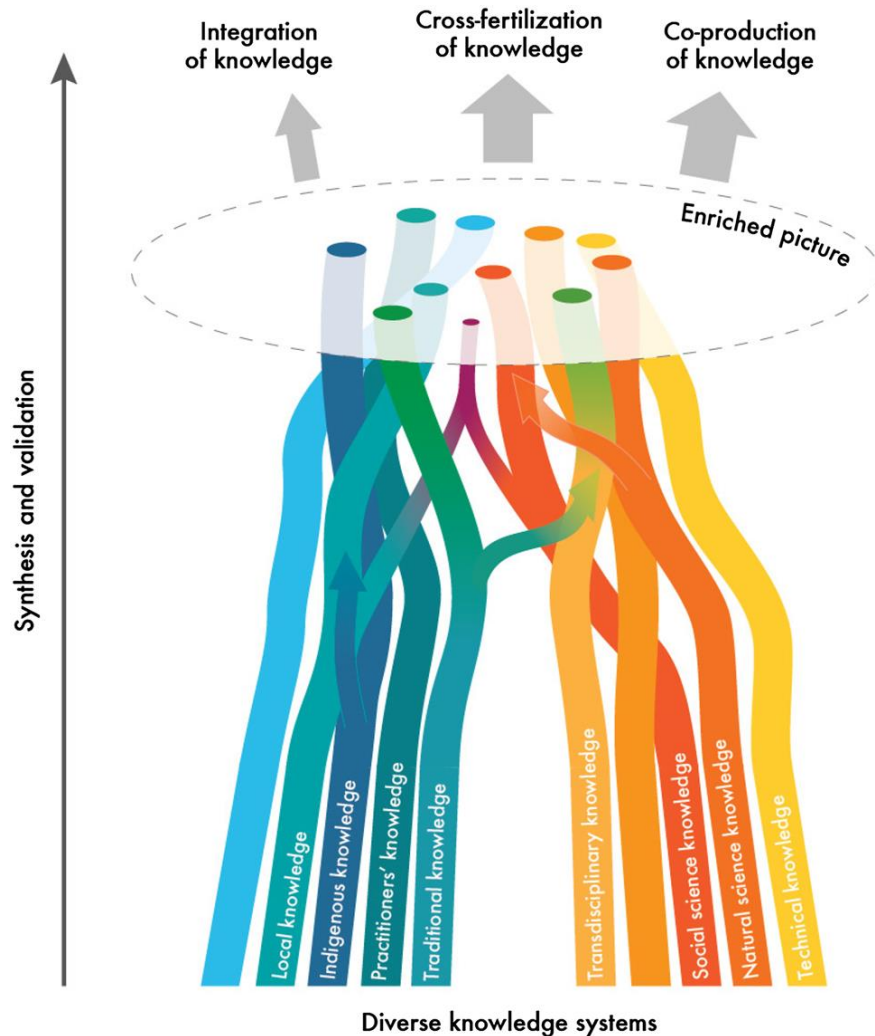


Indigenous decisions makers

- Aim for multiple evidence approach
- Indigenous, local knowledge & science
- Face social, technological, organisational barriers



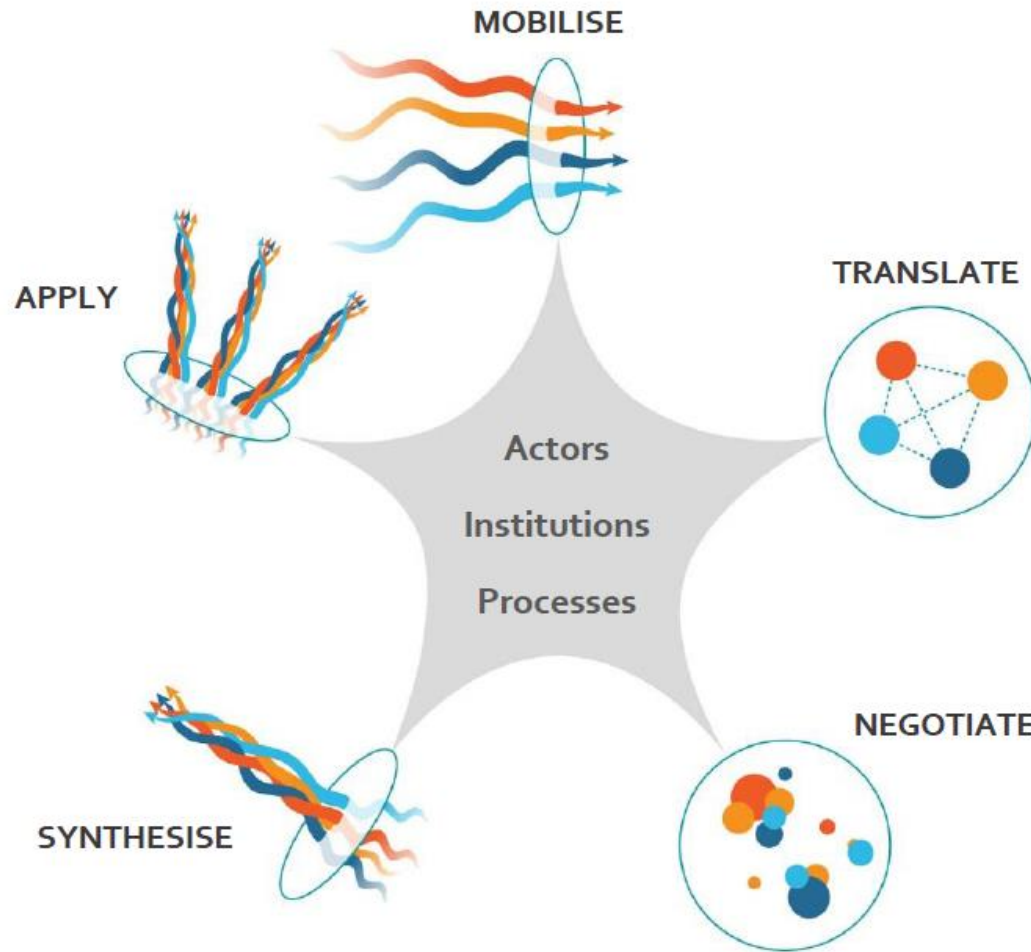
Multiple evidence approach



Our decisions
Decisions of others

Tengö, M., E. Brondizio, T. Elmqvist, P. Malmer, and M. Spierenburg. 2014. *Ambio*:1-13.

Framework of stages



**Indigenous
people:
require
strongly
visual &
deliberative
processes**

Tengö, M., R. Hill, P. Malmer, C.M. Raymond, M. Spierenburg, F. Danielsen, T. Elmqvist, and C. Folke. 2016 (accepted).. *Current Opinion in Environmental Sustainability*..

Enabling actors & institutions: interactive 3D model



Understanding actor influence



What are their goals?

How are they connected?



And how do they use these connections to drive decisions to achieve their goals?

Outcome

- Indigenous peoples can
 - contribute to and evaluate alternative development and management scenarios
 - Bring multiple evidence to make and influence decisions
- Research:
 - Identify enabling conditions
 - Disseminate through “Our Knowledge Our Way Guidelines”



This project is supported through funding from the
Australian Government's National Environmental Science Programme.

For more information please contact:

Name: **Ro Hill**

Phone: **(07) 40595013**

Email: **Ro.hill@csiro.au**

0418188958