



Gooniyandi Rangers working with the NESP fish team.



**Northern Australia
Environmental
Resources
Hub**

National Environmental Science Programme



nespnorthern.edu.au



nesp.northern@cdu.edu.au



[/NESPNorthern](https://www.facebook.com/NESPNorthern)



[@NESPNorthern](https://twitter.com/NESPNorthern)

Leah Beesley

IMPACT STORY 2019

A transdisciplinary approach to WA's Fitzroy River water planning

The mighty National Heritage-listed Fitzroy River in the west Kimberley has the largest flow of any river in Western Australia. With increasing interest in irrigated agriculture in the region, research by the NESP Northern Hub is increasing knowledge of the important environmental and cultural water requirements of the river, working in partnership with the Fitzroy River Traditional Owners. Principles being developed for water planning and management will be used to guide sustainable water use to maintain critical ecological processes and the valued relationships Indigenous peoples' maintain with the river and its billabongs, floodplains and groundwater.



Find out more about these projects



Michael Douglas

Yimardoo-Warra Ranger Jeremiah Green collecting data on the Fitzroy River to help inform water planning.

The west Kimberley region is on the National Heritage list for its rich natural and cultural values, including those of the Fitzroy.

– Commonwealth of Australia 2011

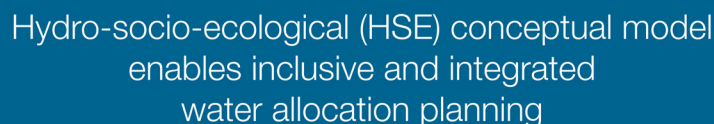
Some pastoralists in the region are increasingly interested in developing irrigated agriculture and the Commonwealth and Western Australian governments have funded reports exploring the potential of the region for water development. The 2016 Fitzroy River Declaration expressed the concerns of the Traditional Owners about the potential impacts of water extraction on the river's cultural and environmental values, and their desire that a catchment management plan include their aspirations for the region and provide a means of involving them in decisions over water.

The Australian Government's National Environmental Science Program's Northern Hub has made a significant contribution to this process, bringing together research on the relationship that the Traditional Owners have with the Fitzroy and undertaking new research on the habitat and food requirements of fish and the environmental water needs of riparian vegetation.

“It’s our active process of governance and management of the water resources that Indigenous people are interested in having recognised, rather than just how much water we need.”

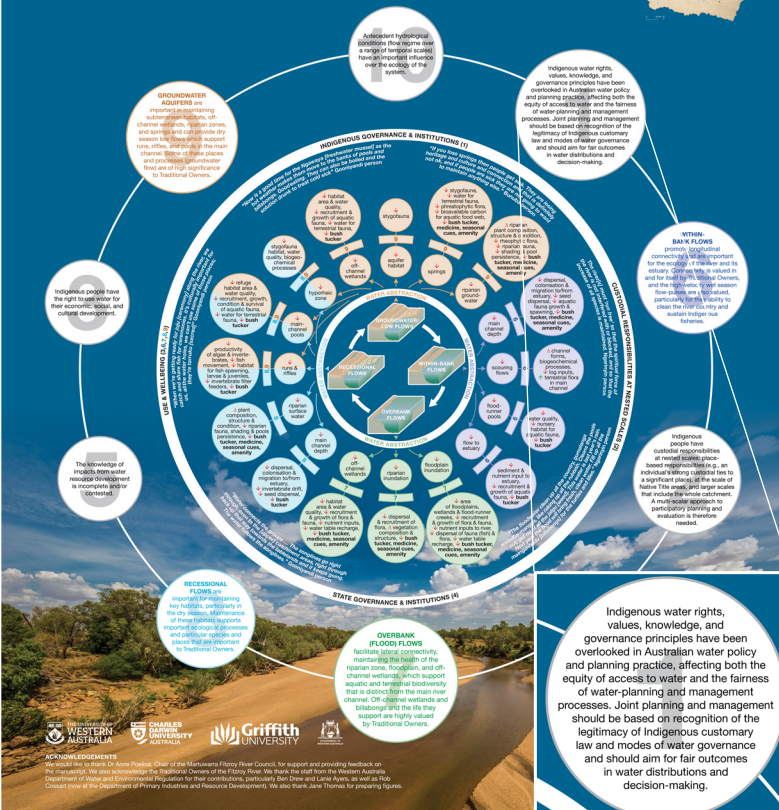
– Dr Anne Poelina, Nyikina Traditional Custodian
and chair of the Martuwarra Fitzroy River Council

Each principle is supported by a number of key considerations, many of which the WA Department of Water and Environmental Regulation (DWER) has used to guide the water allocation plan.



Michael M. Douglas^{1,2}, Sue Jackson³, Caroline A. Canham¹, Sarah Laborde^{1,3}, Leah Beesley¹, Mark J. Kennard¹, Bradley J. Pusey^{1,2,3}, Robyn Loomes¹, Samantha A. Setterfield¹

- We used a transdisciplinary approach to support more inclusive water planning in WA's Fitzroy River
- We developed a HSE conceptual model to underpin water allocation decisions
- We proposed 10 principles for using e-flows to protect biodiversity and Indigenous values



This poster was produced to highlight the conceptual model developed around the 10 principles for using e-flows to protect aquatic ecosystems and their dependent human cultures and livelihoods.

“It’s a peer reviewed, scientific approach,” says Robyn Loomes, environmental officer with DWER, who was directly involved in the research that has now been published in the journal *One Earth* (and is freely available online).

“We’ve used the environmental principles to frame our approaches and to really focus on the key components of the water regime. Each principle has a detailed set of considerations and we’ve made sure we’ve addressed those.”

– Mrs Robyn Loomes

Mrs Loomes says that a strength of the Northern Hub is their ability to manage complex research projects while still being flexible enough to adapt to emerging questions.

“The science has been tailored to answer our questions directly in relation to our water requirement and water planning needs.”

– Robyn Loomes

The Northern Hub’s ‘shared learning’ approach to research and its strong relationship with Traditional Owners in the Fitzroy River catchment has helped DWER to better understand the river and the relationships that people have with it.

Mrs Loomes explains that while DWER has a long history of working with Traditional Owners in the Fitzroy, most of these meetings have taken place in towns or communities.

“Working with the Northern Hub and being in the field means that I’ve gotten to be out on country with people and actually see and experience places that they value and to share their stories. The Hub’s work with the Traditional Owners has provided an amazing insight into the complexities and nuances of working in the Fitzroy. And that is an incredible strength.”

– Robyn Loomes

The next steps in this transdisciplinary project involve moving beyond the literature to draw in results from field research to ensure that final recommendations more precisely reflect Indigenous ways of understanding the river and their relations with it, as well as deeper ecological knowledge obtained through fieldwork.

Reference

Commonwealth of Australia. 2011. Australian Heritage Council’s final assessment of national heritage values of the West Kimberley.

Research outputs

Scientific papers

- [Water velocity and groundwater upwelling influence benthic algal biomass in a sandy tropical river: Implications for water-resource development](#) (January 2020)
- [Conceptualizing hydro-socio-ecological relationships to enable more integrated and inclusive water planning](#) (November 2019)
- [Water and Indigenous rights: Mechanisms and pathways of recognition, representation, and redistribution](#) (September 2018)
- [Building trust and establishing legitimacy across scientific, water management and Indigenous cultures](#) (August 2018)

Factsheets

- [Environmental water needs for the Fitzroy River](#) (project update, February 2019)
- [Finding out about fish in the Fitzroy](#) (research story, March 2019)
- [Water and Indigenous rights: Mechanisms and pathways of recognition, representation, and redistribution](#) (science summary, October 2018)
- [Building trust and establishing legitimacy across scientific, water management and Indigenous cultures](#) (science summary, October 2018)
- [Indigenous water needs for the Fitzroy River](#) (start-up factsheet, September 2016)
- [Environmental water needs for the Fitzroy River](#) (start-up factsheet, August 2016)

Project webpages

- [Environmental water needs for the Fitzroy River](#)
- [Indigenous water needs for the Fitzroy River](#)

Attributions

- Project leaders: Michael Douglas (The University of Western Australia), Sue Jackson (Griffith University)
- Caroline Canham, Leah Beesley, Brad Pusey, Samantha Setterfield (The University of Western Australia), Sarah Laborde, Mark Kennard (Griffith University), Robyn Loomes (WA Department of Water and Environmental Regulation)

