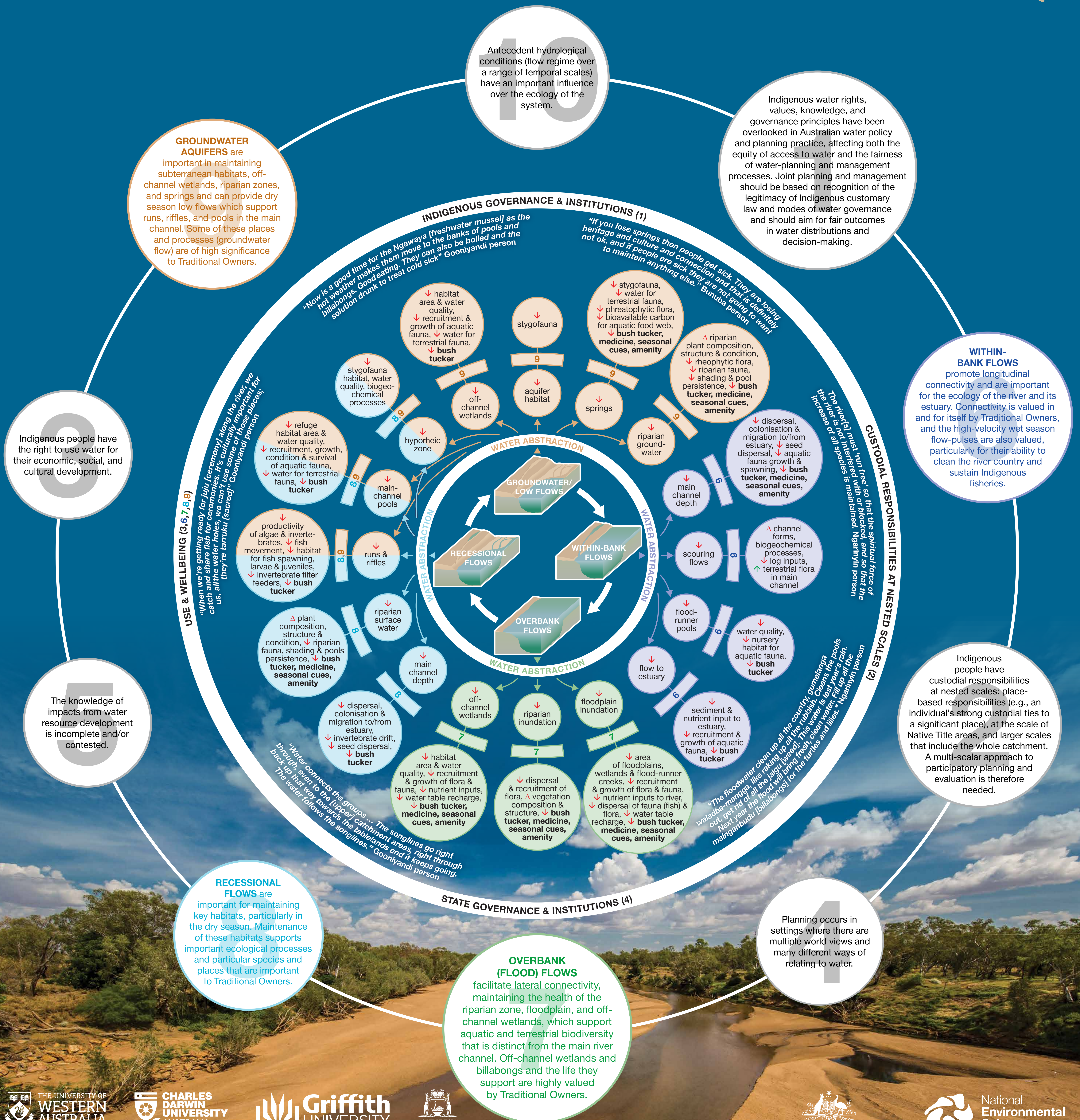


Hydro-socio-ecological (HSE) conceptual model enables inclusive and integrated water allocation planning

1. School of Biological Sciences, The University of Western Australia, Crawley, WA 6009, Australia. 2. Research Institute for Environment and Livelihoods, Charles Darwin University, Darwin, NT 9090, Australia. 3. Australian Rivers Institute, Griffith University, Nathan, QLD 4111, Australia. 4. Department of Water and Environmental Regulation, Western Australian Government, Joondalup, WA 6027, Australia

Douglas MM, Jackson S, Canham CA., Laborde S, Beesley L, Kennard MJ, Pusey BJ, Loomes R & Setterfield SA. 2019. Conceptualizing hydro-socio-ecological relationships to enable more integrated and inclusive water allocation planning. *One Earth* 1(3), 361–373. <https://doi.org/10.1016/j.oneear.2019.10.021>

- We used a transdisciplinary approach to support more inclusive water planning in WA's Fitzroy River
- We developed a HSE conceptual model to underpin water allocation decisions
- We proposed 10 principles for using e-flows to protect biodiversity and Indigenous values



ACKNOWLEDGEMENTS

ACKNOWLEDGEMENTS

We would like to thank Dr Anne Poelina, Chair of the Martuwarra Fitzroy River Council, for support and providing feedback on the manuscript. We also acknowledge the Traditional Owners of the Fitzroy River. We thank the staff from the Western Australia Department of Water and Environmental Regulation for their contributions, particularly Ben Drew and Lanie Ayers, as well as Rob Cossart (now at the Department of Primary Industries and Resource Development). We also thank Jane Thomas for preparing figures.

Australian Government

This project is supported through funding from the Northern Australia Environmental Resources Hub of the Australian Government's National Environmental Science Program.