

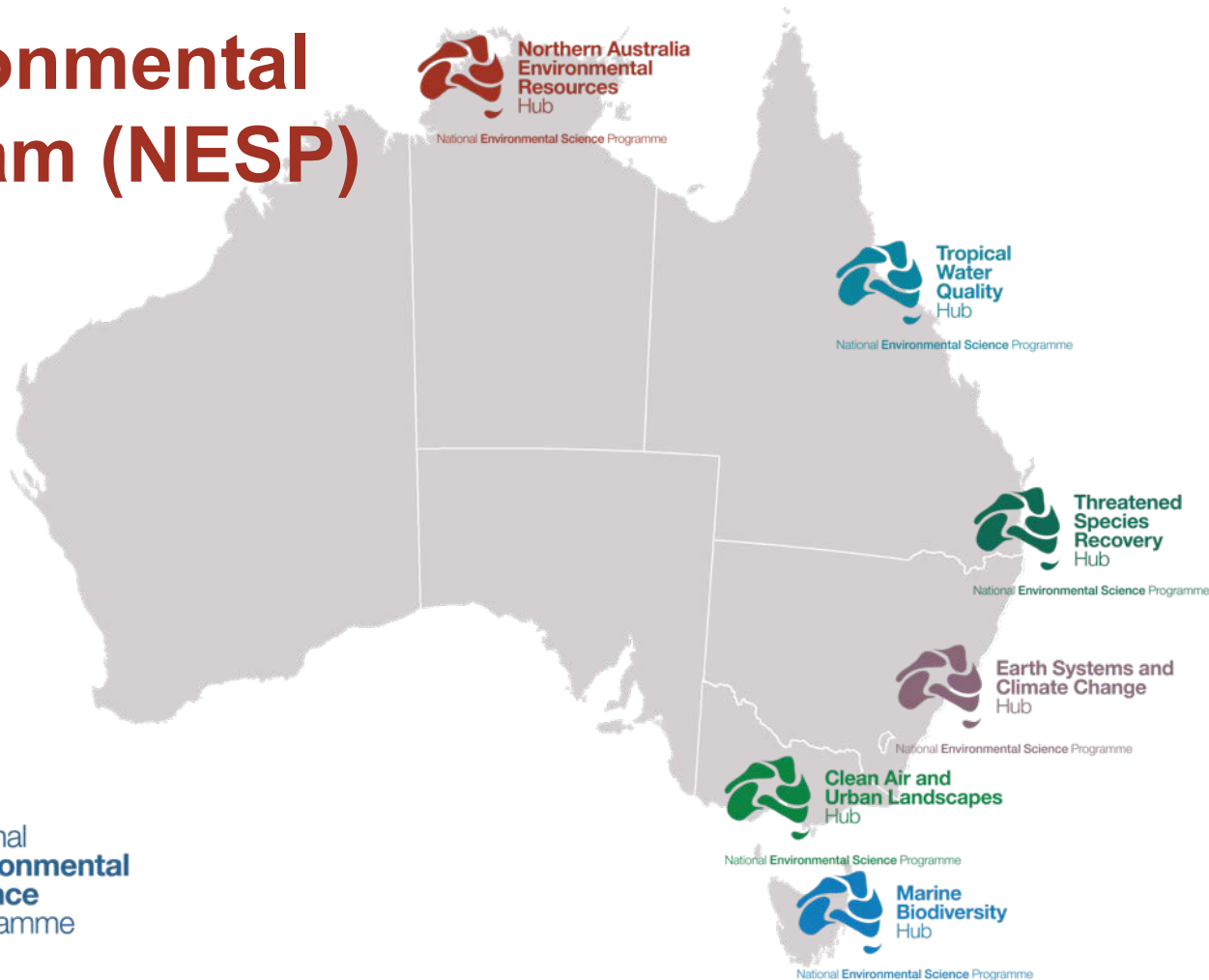
Communicating research for impact: Making a difference in northern Australia

Patch Clapp, Jane Thomas & Michael Douglas



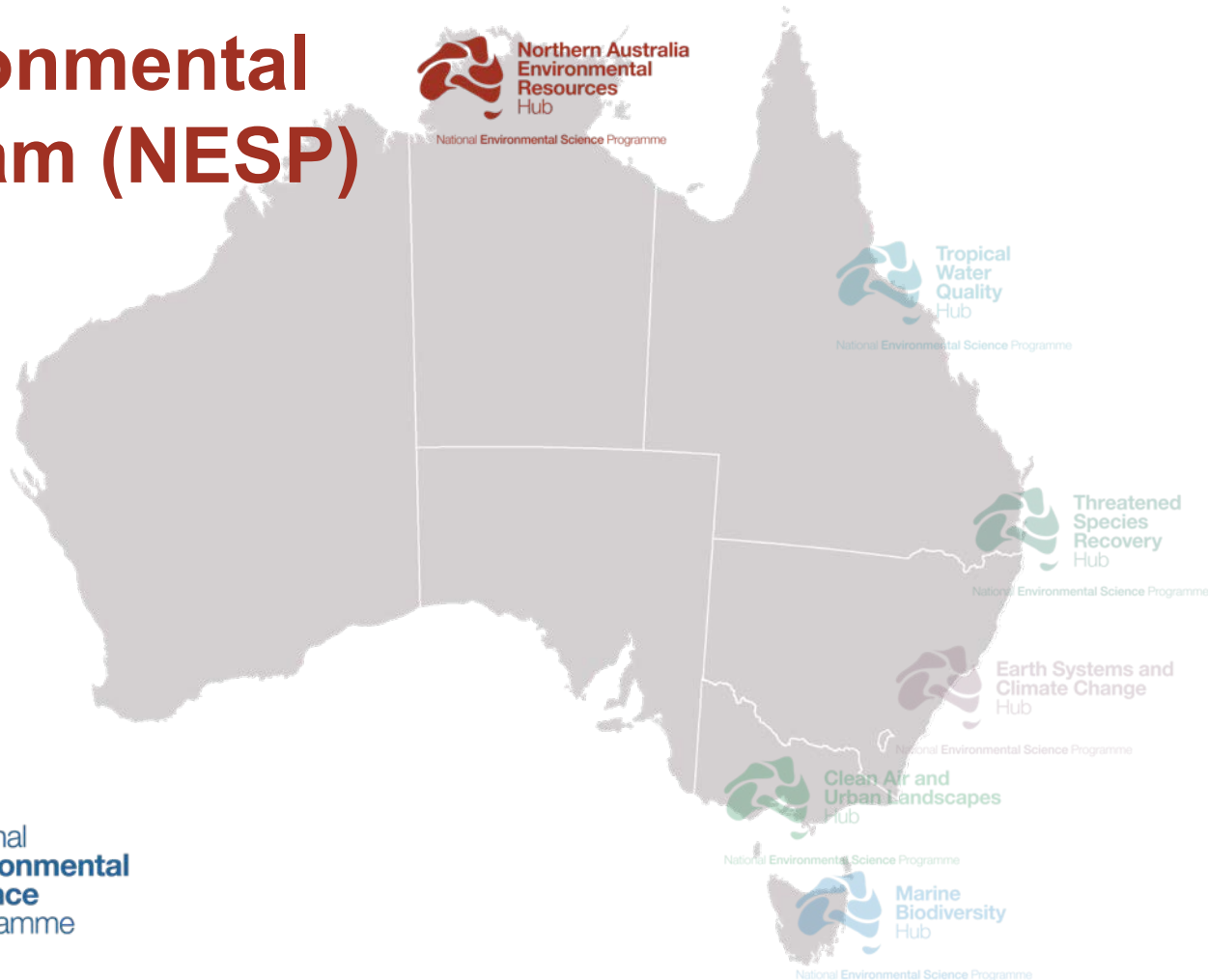
National Environmental Science Programme (NESP)

- \$145m over 6 years (2015–2021)
- Environmental and climate research to inform policy



National Environmental Science Programme (NESP)

- \$145m over 6 years (2015–2021)
- Environmental and climate research to inform policy



Northern Australia Hub

- **Goal to support sustainable development in northern Australia**
- \$24m+ over 6 years (2015–2021)
- Many partners, led by Prof Michael Douglas at UWA
- Builds on Tropical Rivers & Coastal Knowledge (TRaCK) and National Environmental Research Programme (NERP)
- Research priorities set by DAWE



Australian Government
Department of Agriculture,
Water and the Environment

40+ projects

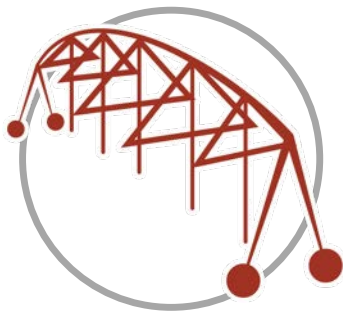


100+ researchers



Supporting sustainable development in northern Australia

De-risking
conventional
development



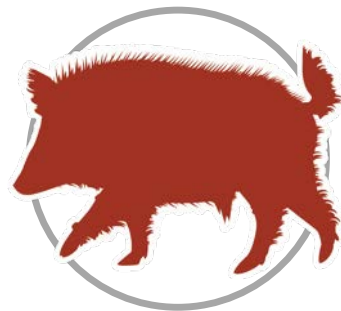
Planning for
future
development



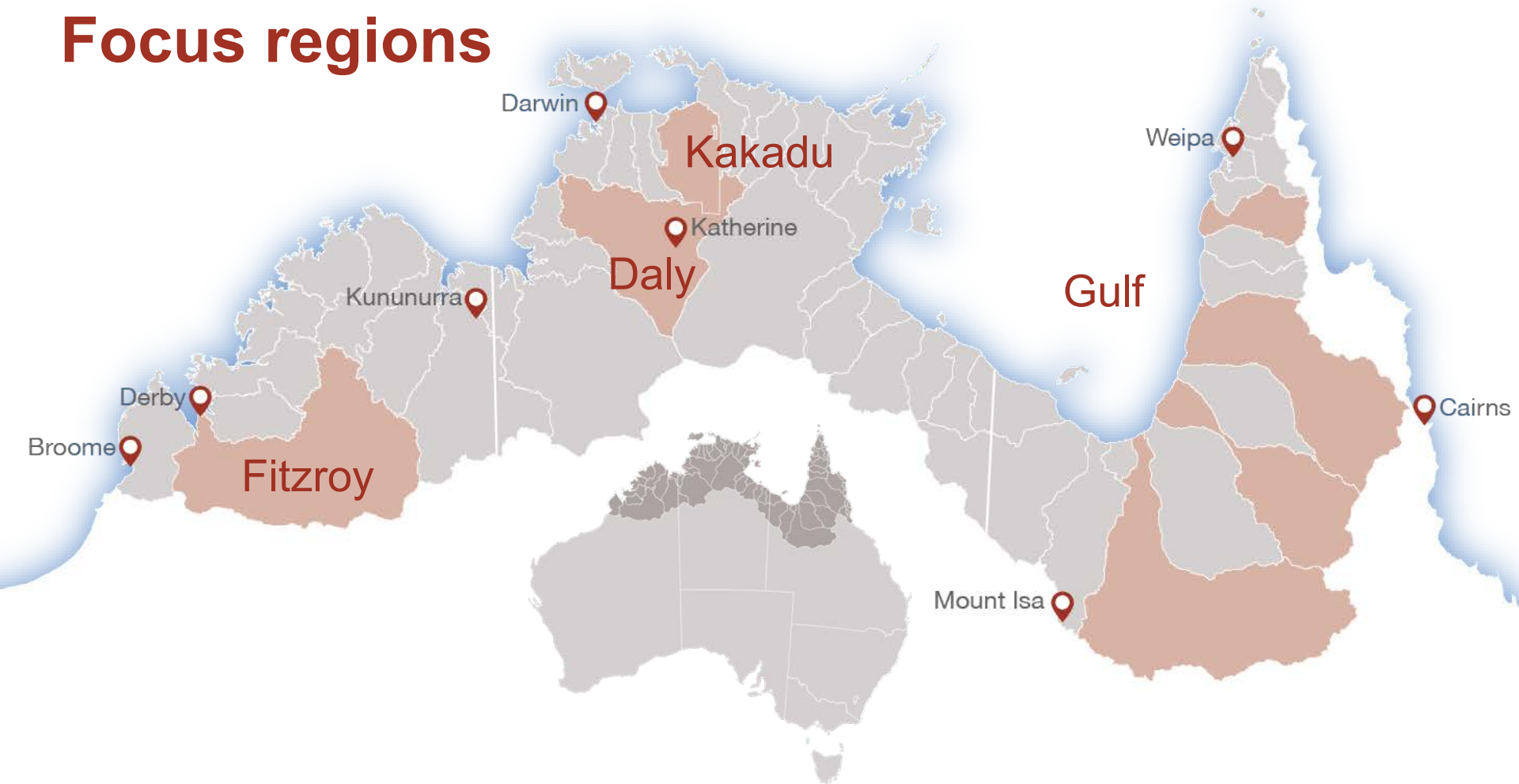
Supporting
alternative economic
opportunities



Managing
threats to
biodiversity



Focus regions

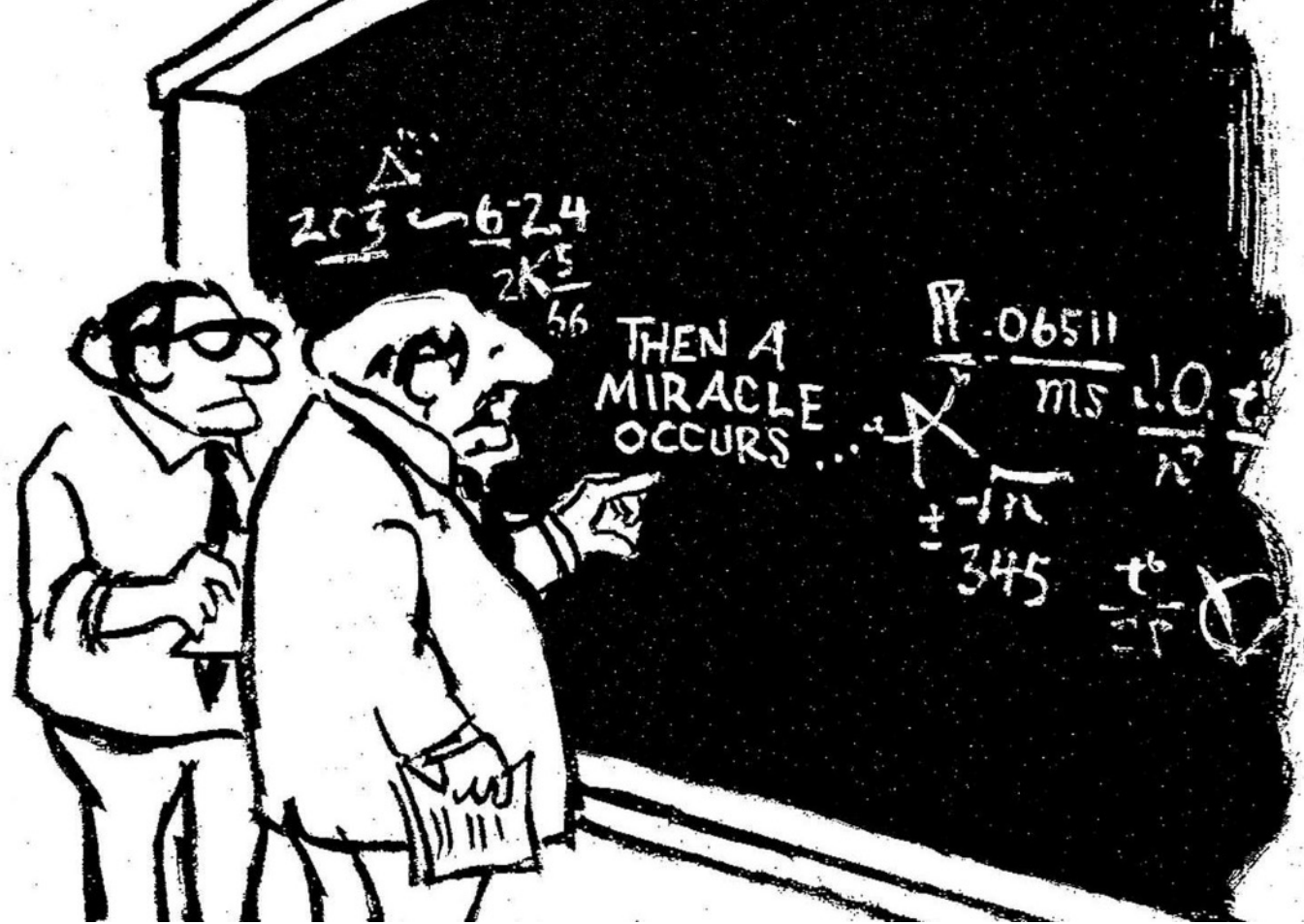


Approach

- **Transdisciplinary research**
 - Environmental, social, economic
- **User focused**
 - Land managers, policymakers and others = audience
 - Co-identification of questions
 - Co-design of projects
 - Research user agreements
 - Ongoing engagement
- **Informing evidence-based policy**



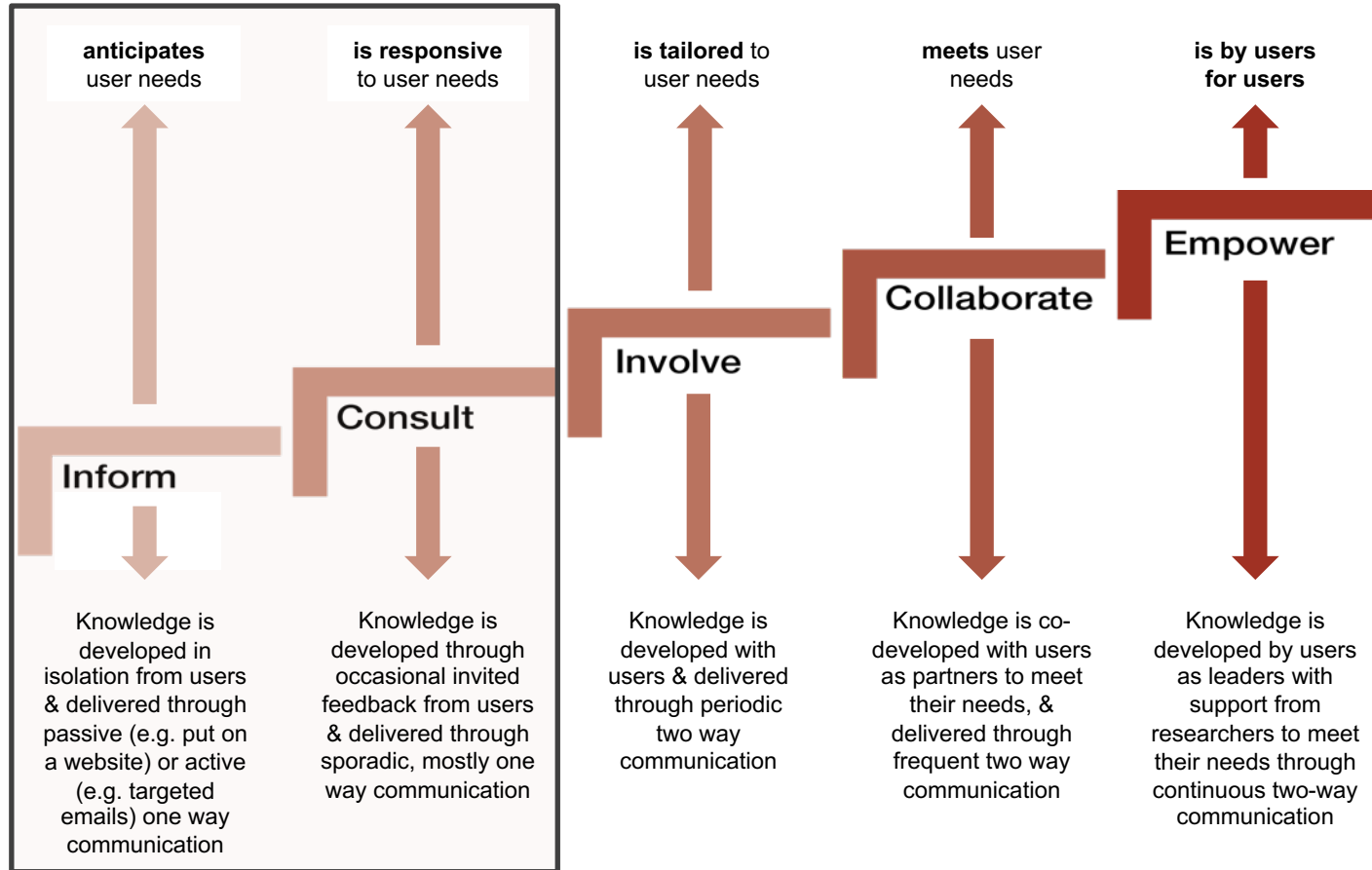
Nathan Green,
Nyikina
Mangala
Yimardoo
Warra Ranger



“I think you should be more explicit here in step two.”

Knowledge development and delivery

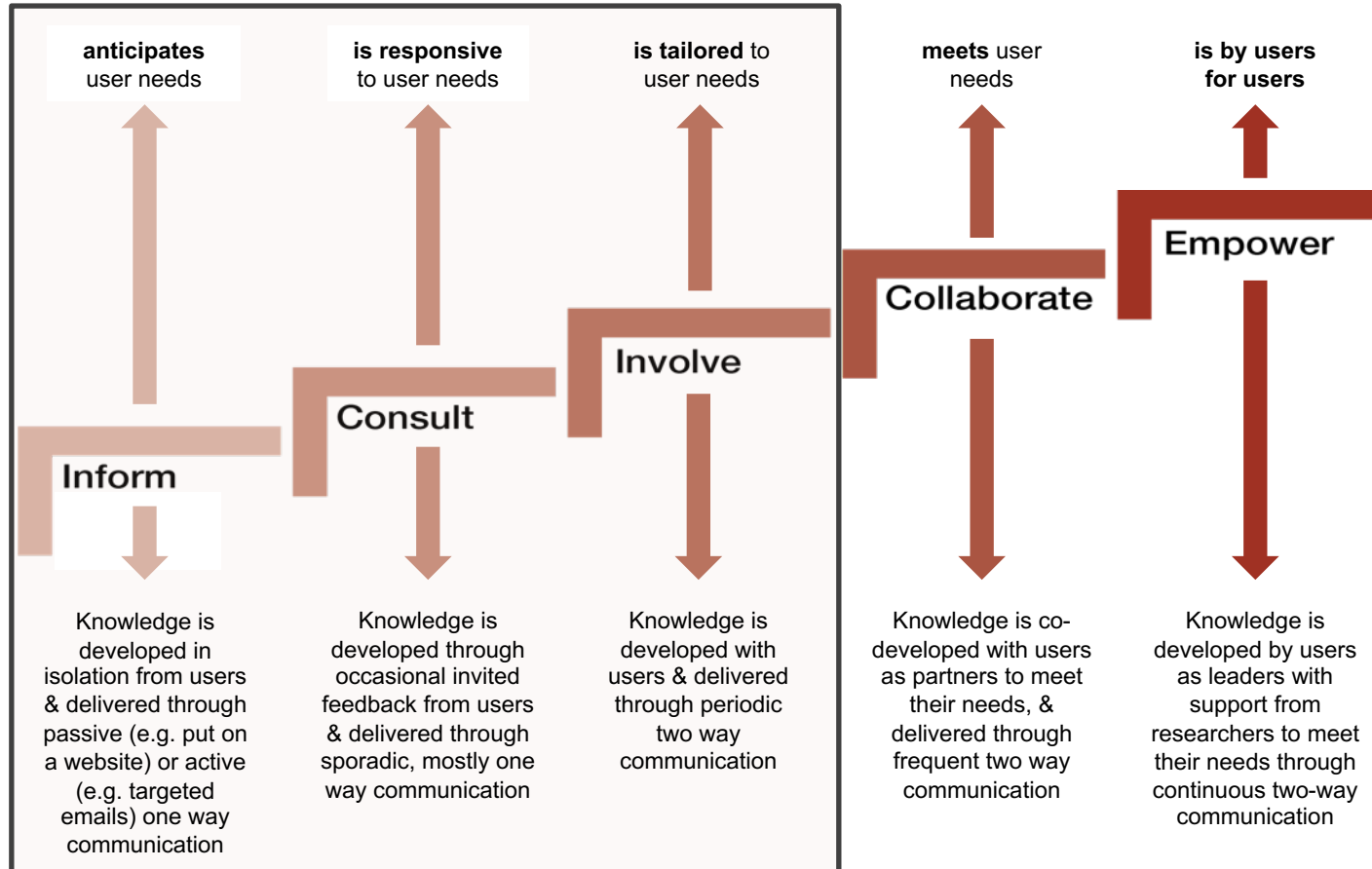
TRaCK



Source: IAP2

Knowledge development and delivery

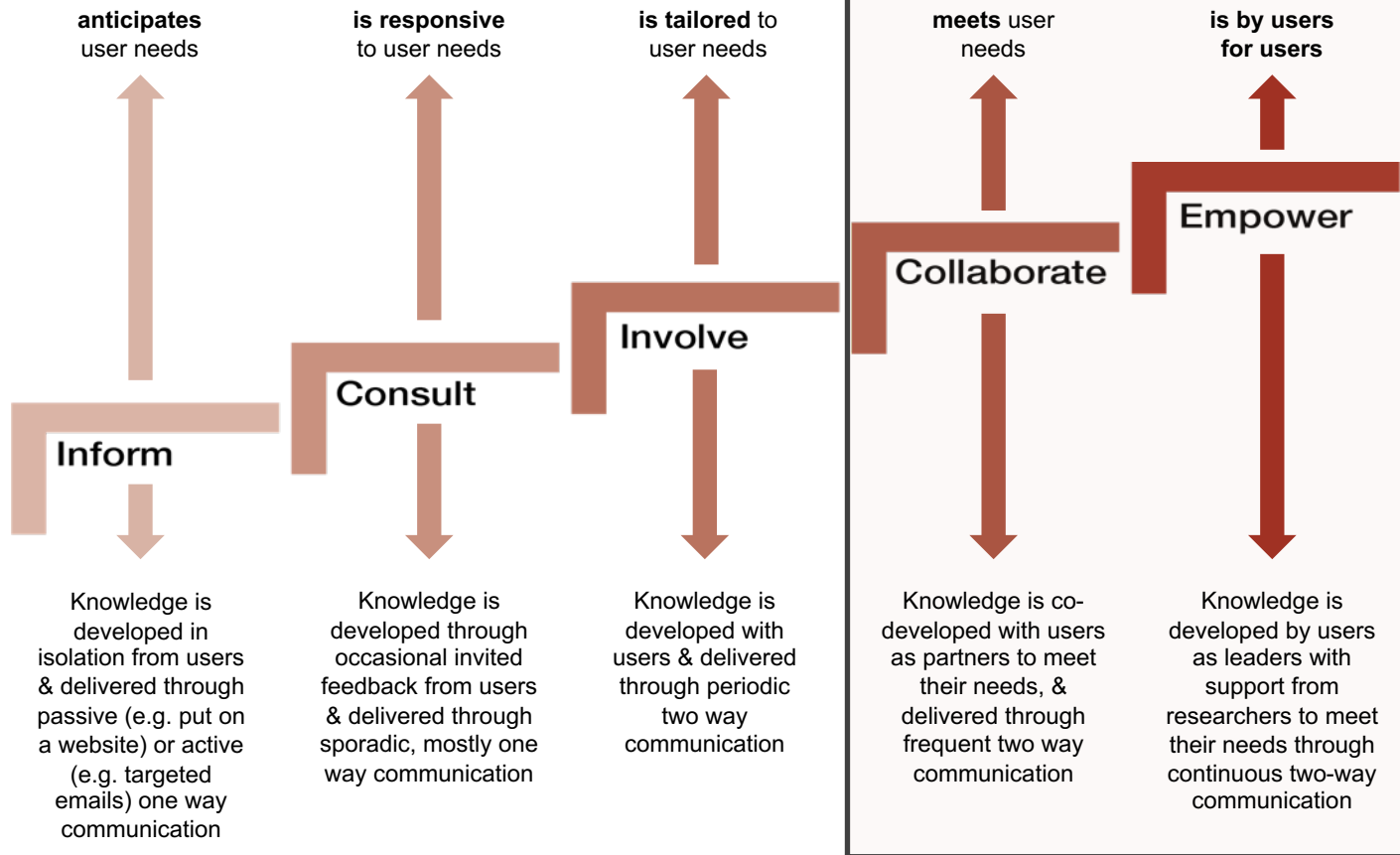
NERP



Source: IAP2

Knowledge development and delivery

NESP
(current)



Source: IAP2

How does that work in practice?

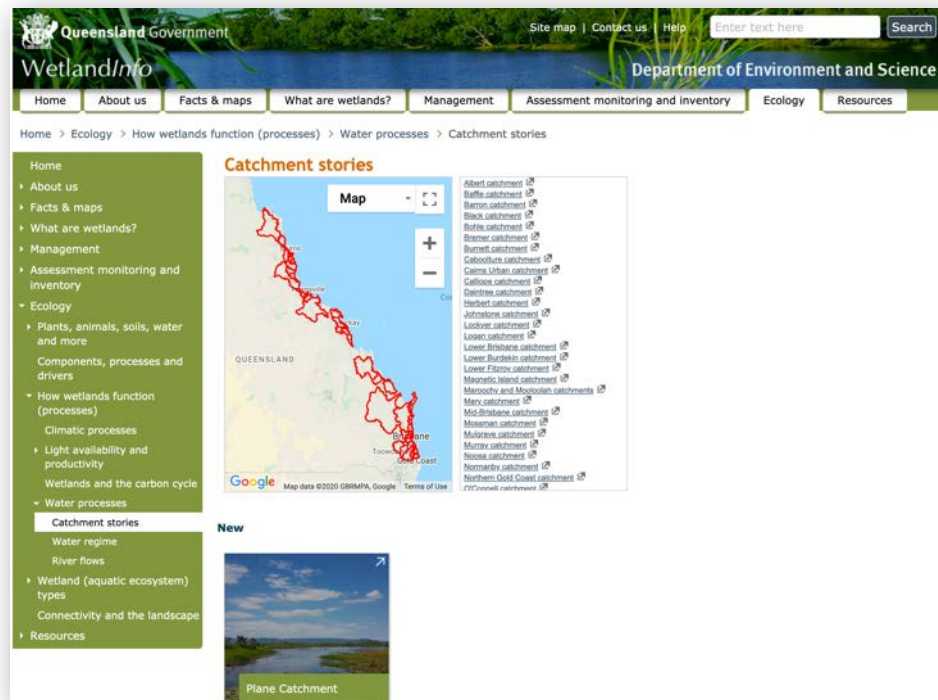
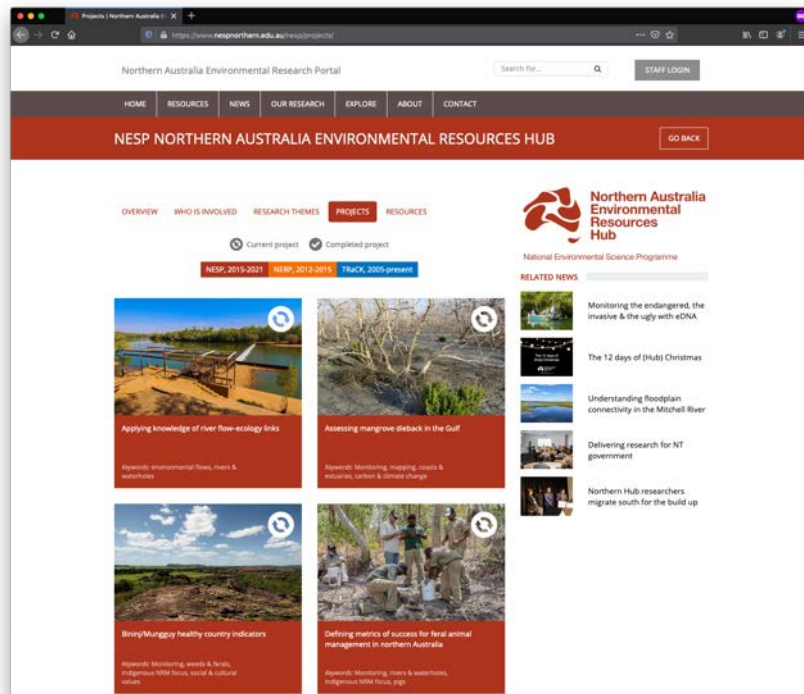
- Involvement of research users and knowledge brokering/communications team in scoping, developing and undertaking the projects
- Identify integration with existing management and policy timelines
- Make engagement an ongoing component of the project, ask users for the best formats and times to discuss and deliver updates and findings
- Diverse communication products and activities crucial

Factsheets

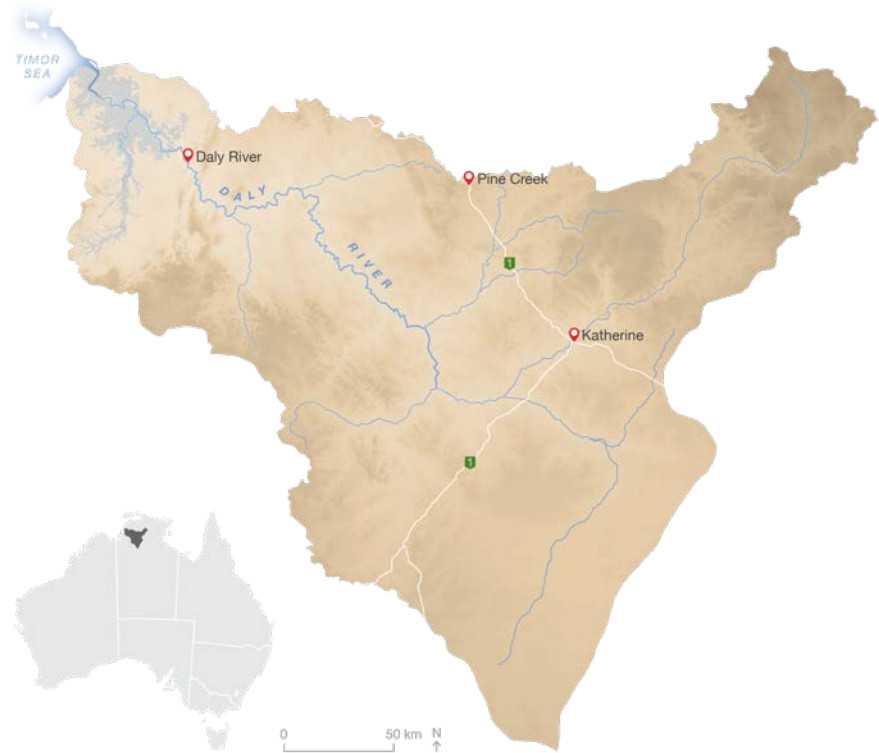


World-class research to support sustainable development in northern Australia

Website



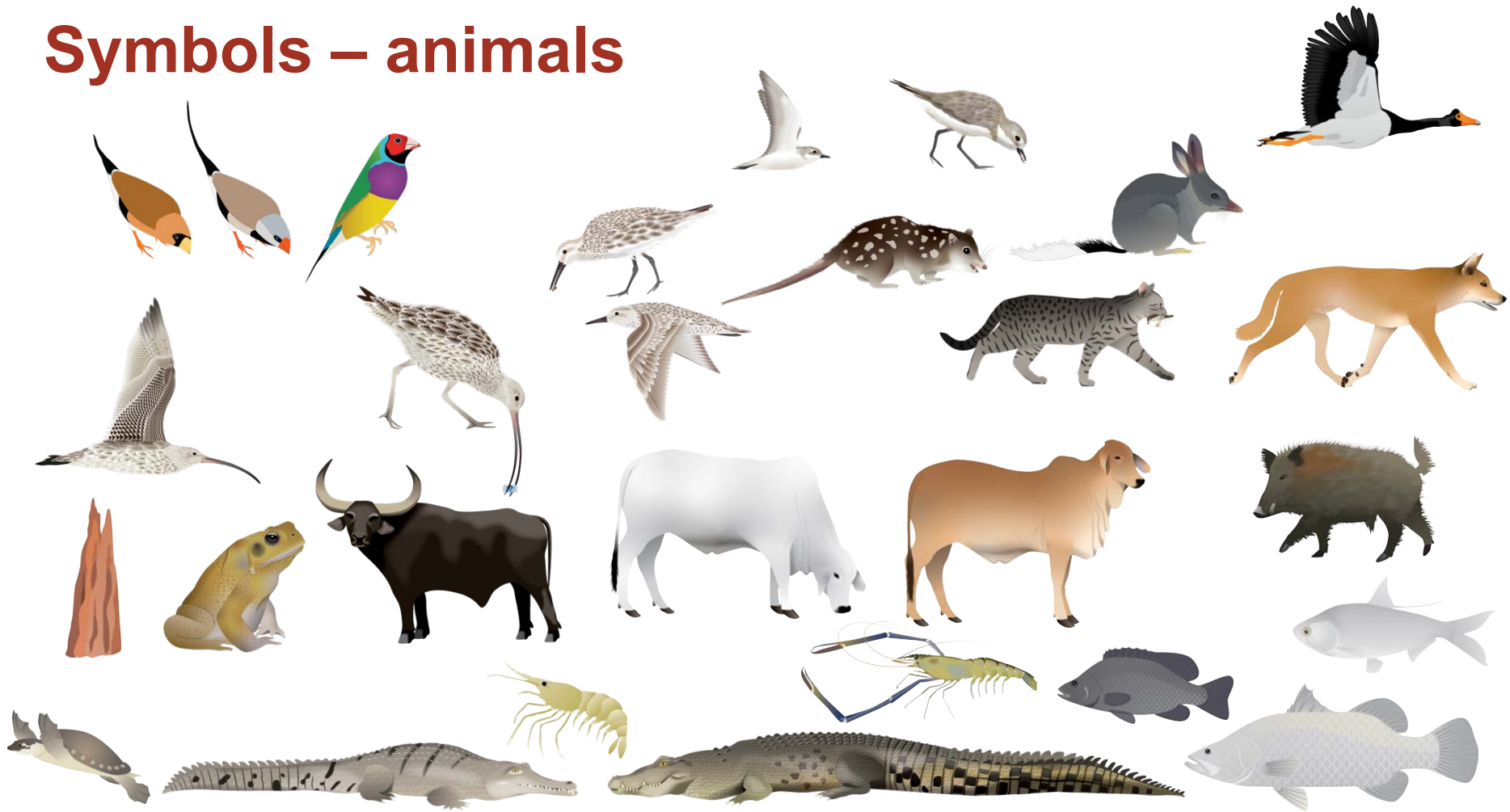
Maps



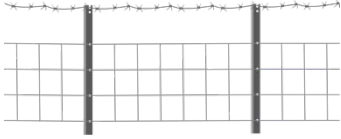
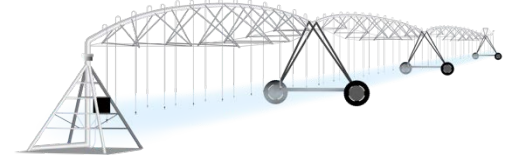
Symbols – plants

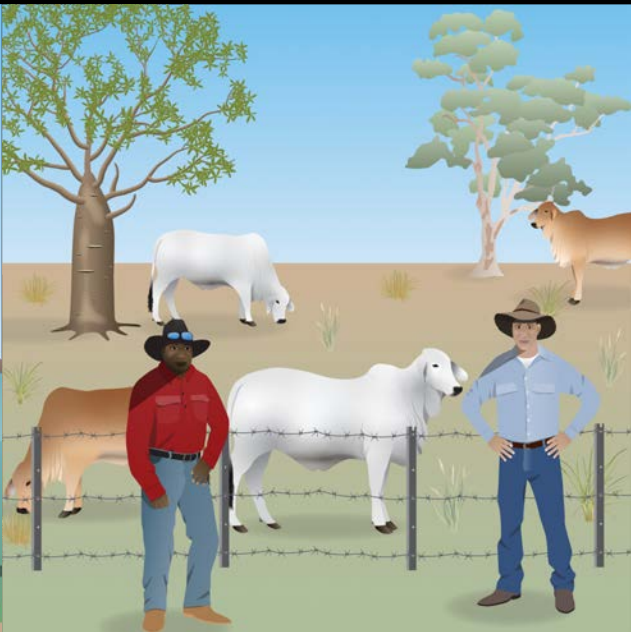
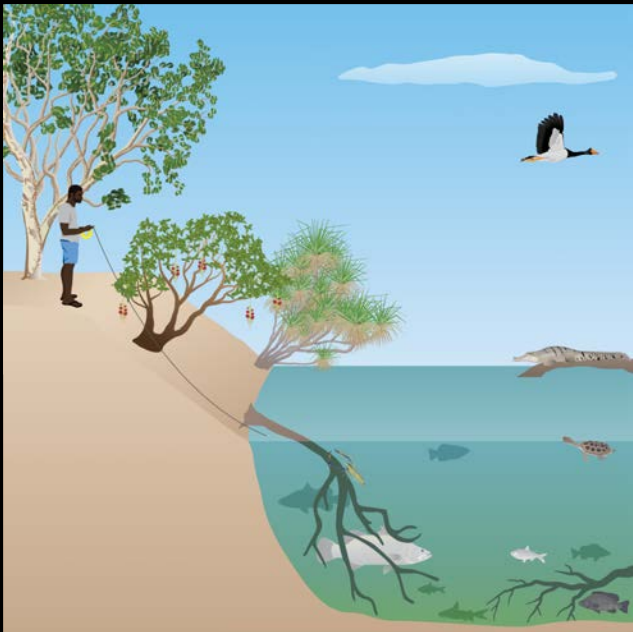


Symbols – animals

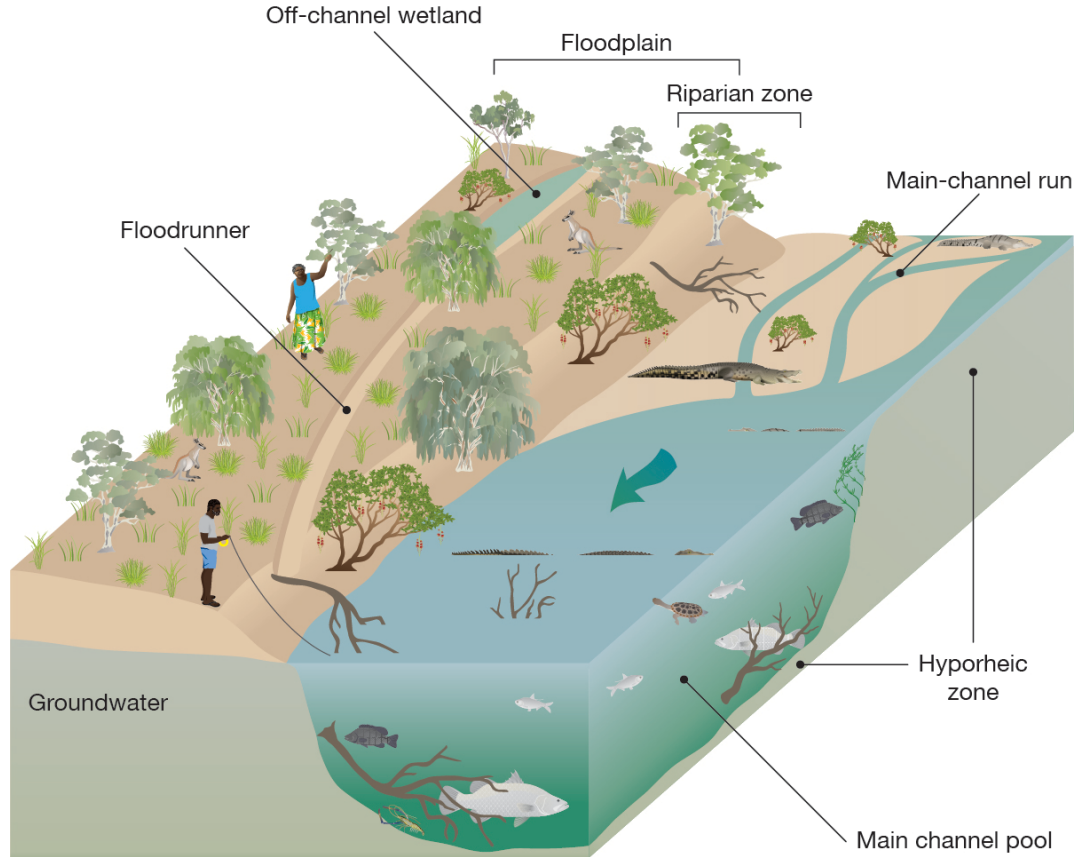


Symbols – people

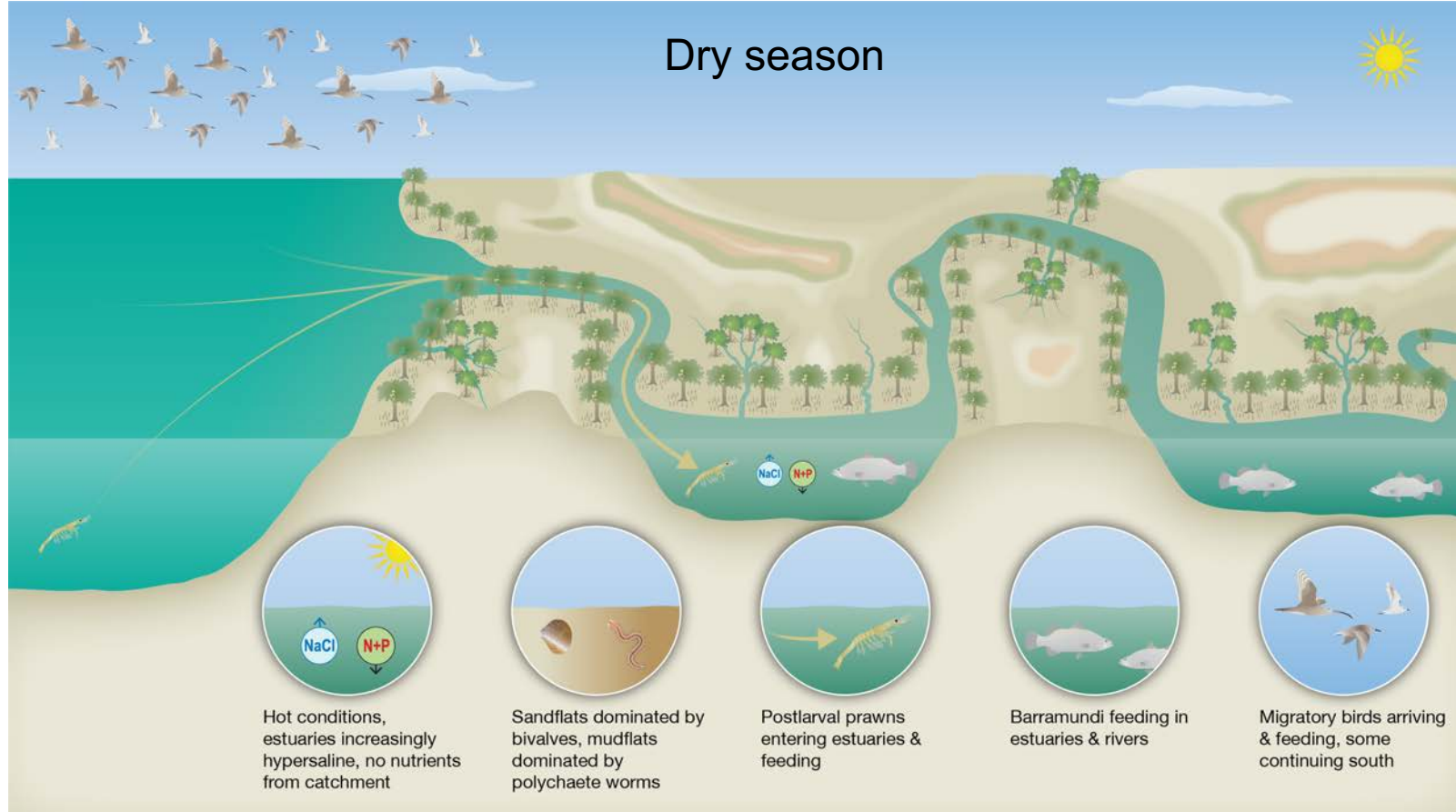




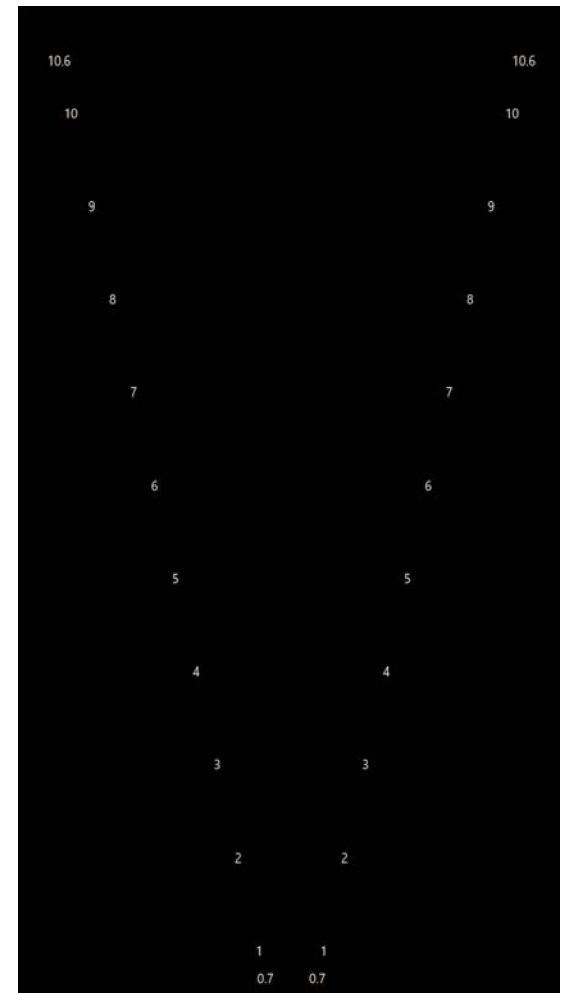
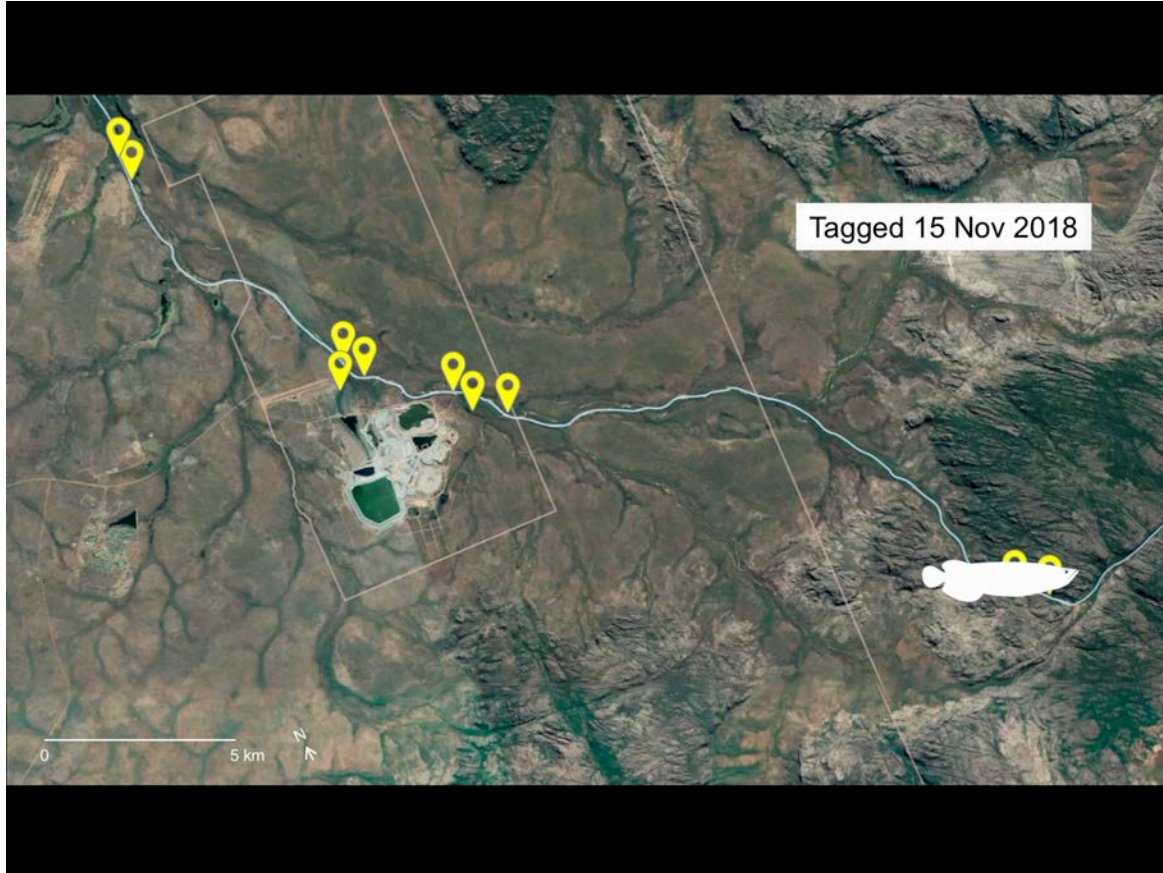
Conceptual diagrams – Fitzroy water needs



Conceptual diagrams – Gulf productivity



Animations



Workshops, meetings, presentations



Impact videos

- Statements from key users
- Projects still ongoing – fast uptake
 - Only possible due to engagement from the outset



BININJ/MUNG GUY HEALTHY COUNTRY INDICATORS



Northern Australia
Environmental
Resources
Hub

National Environmental Science Programme



Finding finches - using eDNA to track endangered birds

from Northern Australia Hub



DEVELOPING EDNA FOR TOP END ANIMALS



Northern Australia
Environmental
Resources
Hub

National Environmental Science Programme



05:12

CC BY-NC-ND vimeo

This work is supported through funding from the
Australian Government's National Environmental Science Program

For more information please contact:

Jane Thomas
Science Communicator
jane.thomas@cdu.edu.au

Patch Clapp
Communications Officer
patch.clapp@cdu.edu.au

Michael Douglas
Hub Leader
michael.douglas@cdu.edu.au