

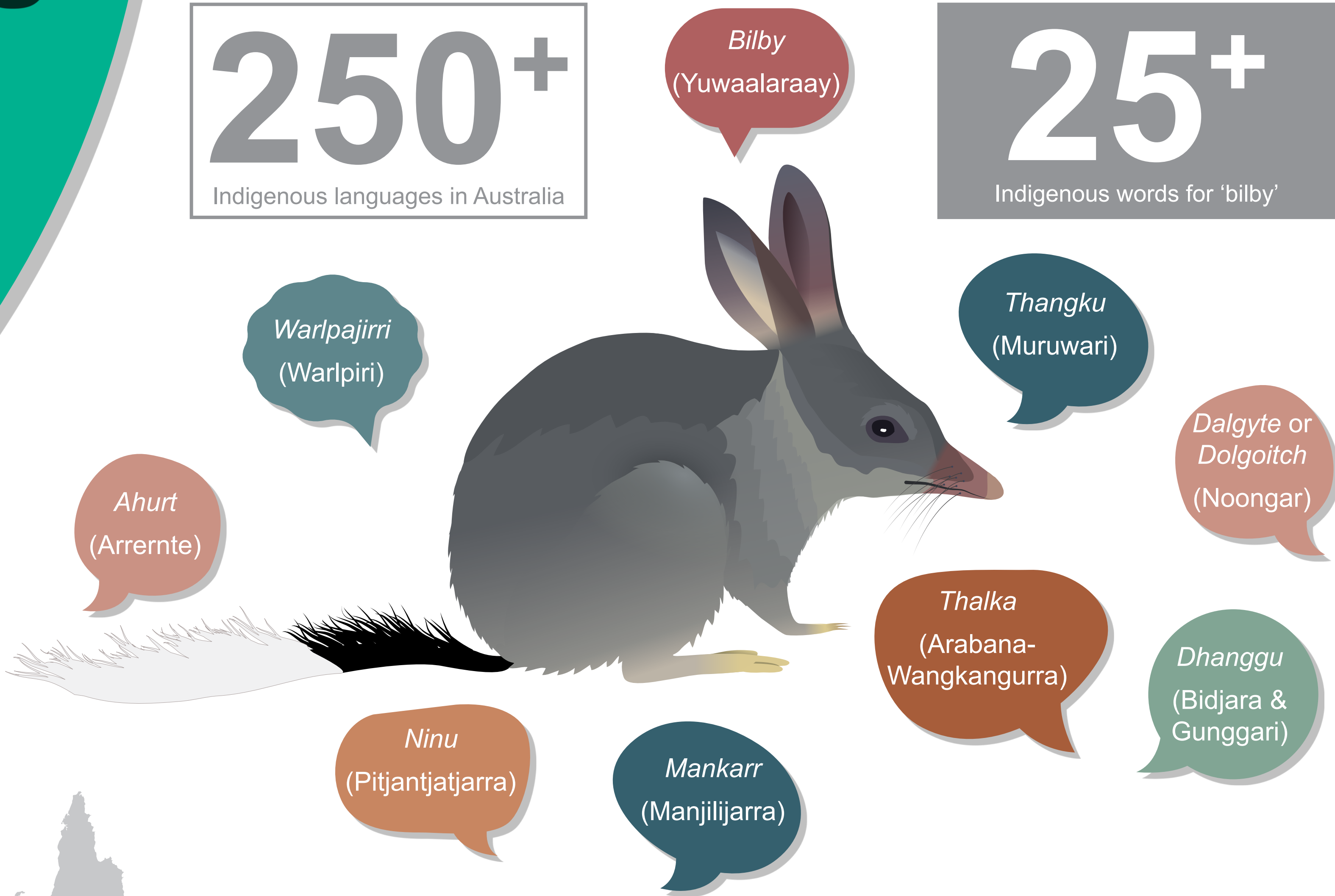
# Visual communication means we're all speaking the same language

- 1. Jane Thomas, Hub Knowledge Broker and Science Communicator, University of Western Australia
- 2. Michael Douglas, Hub Leader, University of Western Australia
- 3. Stephen van Leeuwen, Hub Senior Indigenous Facilitator, Indigenous Professor in Biodiversity and Environmental Science, Curtin University

# CREATING COMMON GROUND

250+  
Indigenous languages in Australia

25+  
Indigenous words for 'bilby'

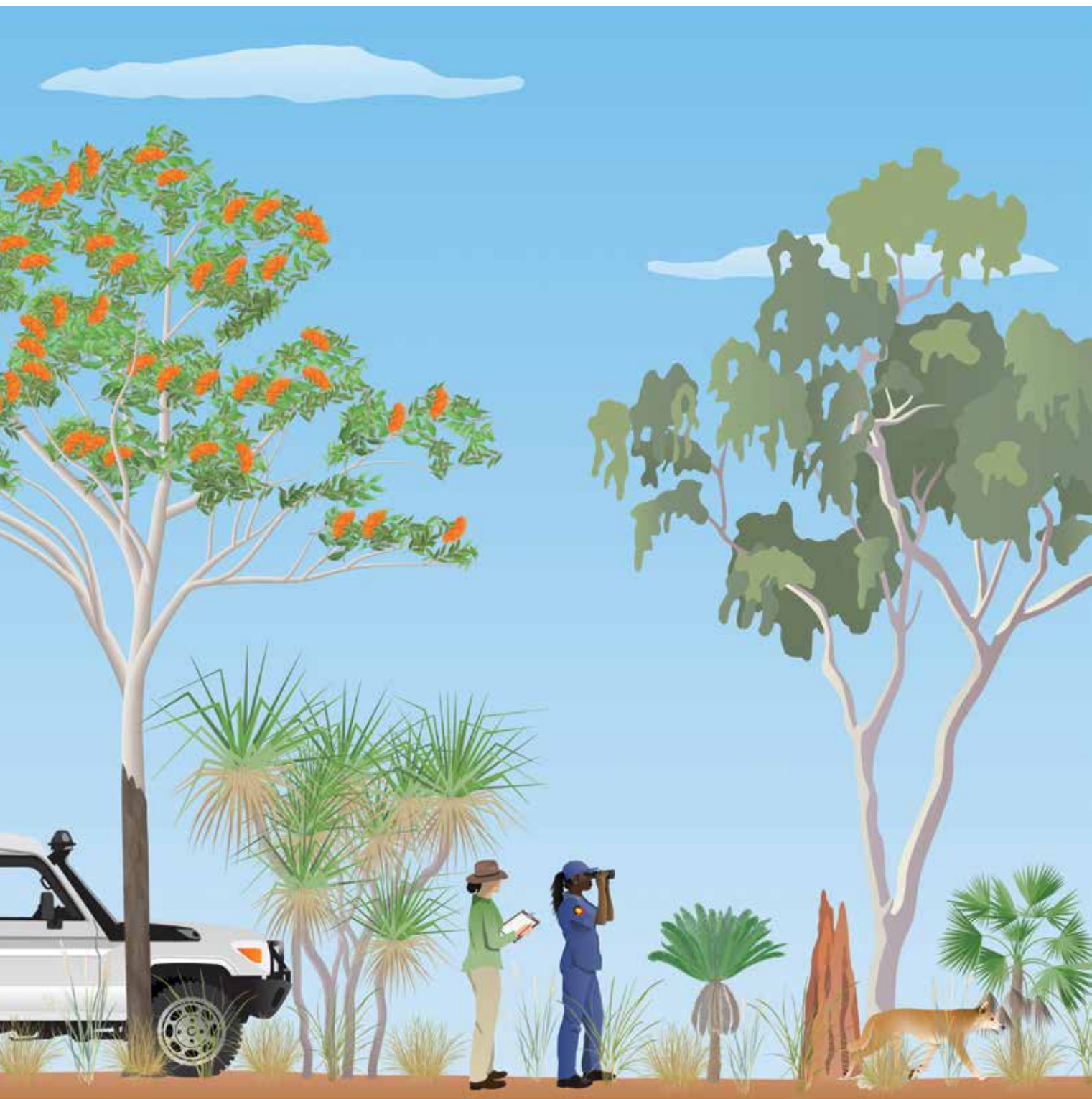
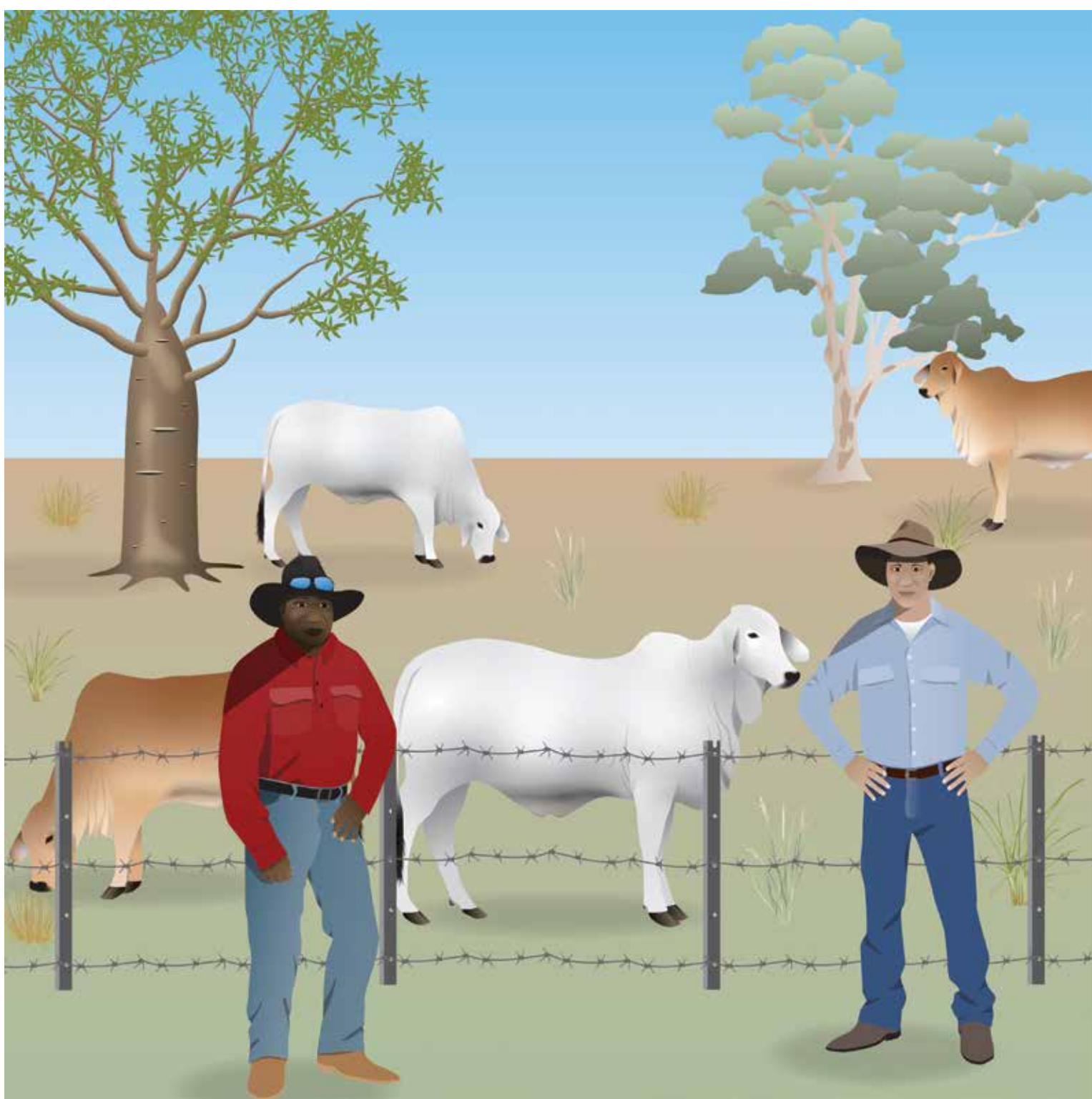
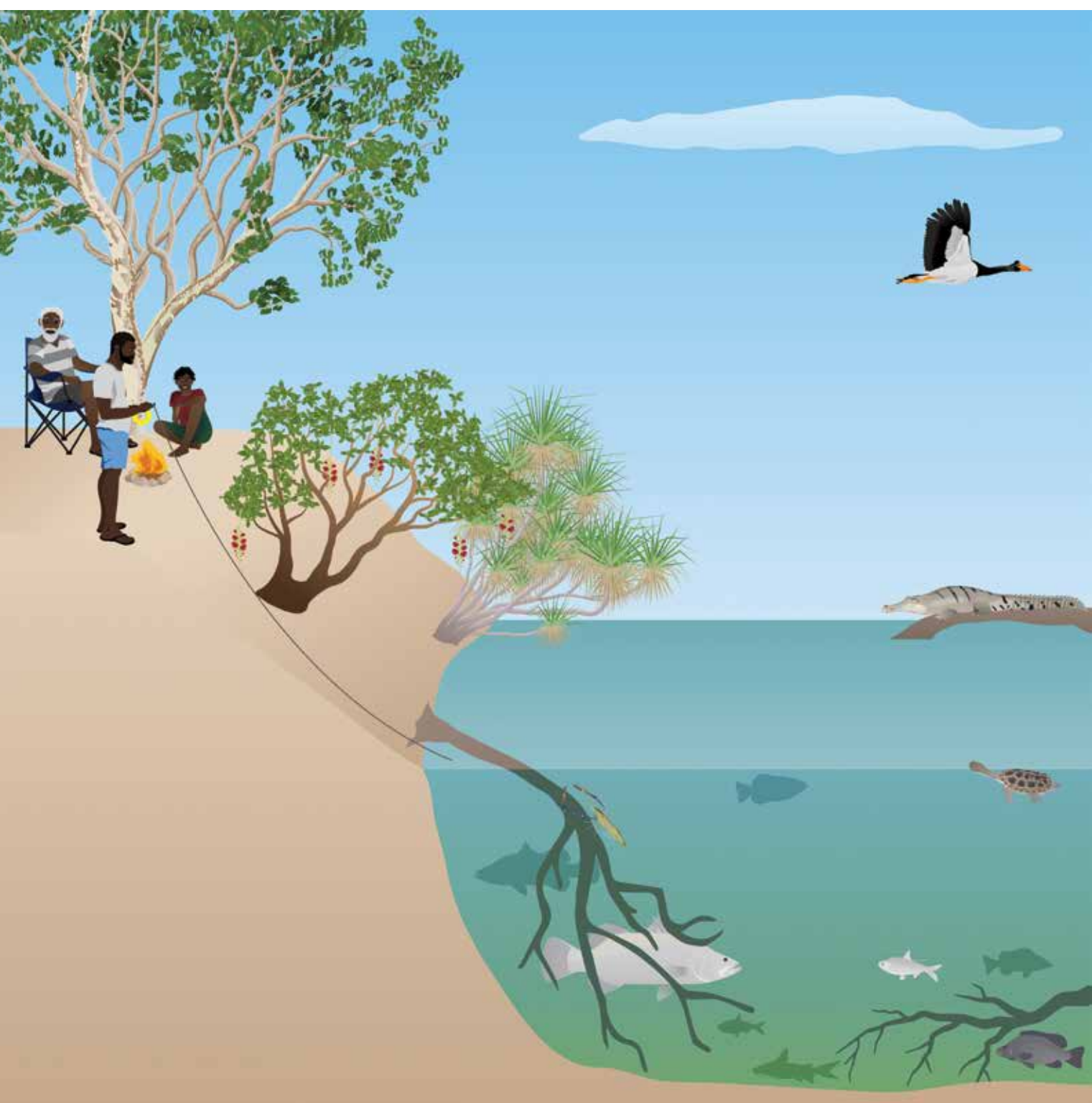


UP TO 3,500 KM  
from the Australian capital to some ecosystems

That's like someone in Rotterdam making decisions about ecosystems in Egypt!



- Australian symbols bring landscapes to life for decision-makers who are far away.
- For people who live in these landscapes, the symbols are credible, relatable and representative.



- Consultation with Indigenous Australians resulted in an expanded set of symbols that better represents First Nations' aspirations, including families being together, being on Country, sharing knowledge, and general wellbeing.
- The range and diversity of symbols are fostering inclusive, two-way communication and better representing Australia's unique landscapes and stories.

200+ Australian symbols

1,000+ registered users



Visual papers:  
Science communication practice

Session 3G,  
3.15pm Wednesday



Resilient Landscapes

National Environmental Science Program



SCAN FOR MORE INFO



This project is supported with funding from the Australian Government under the National Environmental Science Program's Resilient Landscapes Hub.

I acknowledge the Traditional Owners of Country throughout Australia and their continuing connection to land, sea and community. I pay my respects to them and their cultures, and to their Elders past, present and emerging. Indigenous research partnerships are a valued component of the hub's research.