

# Monitoring Country

## Developing an Indigenous Environmental Monitoring Platform

Project information



Resilient Landscapes

National Environmental Science Program



Mala rangers survey for Tjakura (Great Desert Skink). Photo: Kate Cranney

This project has developed an online platform, 'Monitoring Country', that supports Indigenous land and sea Country managers with environmental monitoring. The platform brings proven methods and technological advice together in one place, helping users choose and implement appropriate approaches for their environmental monitoring needs.

### Monitoring Country online platform

Indigenous rangers protect, manage and monitor vast areas of Country Australia-wide. They do so with limited clear guidance on which monitoring tools to use, how to optimise methods, and how to manage data while maintaining sovereignty of their data. Co-designed with Indigenous practitioners, the Monitoring Country project has developed an online platform to address this need, bringing together practical protocols and technologies to support more effective on-Country monitoring and management.

The Monitoring Country platform helps protect bio-cultural values, address key threats, strengthen how information is captured, stored and analysed, and provides guidance on reporting to improve environmental, economic, social and cultural outcomes.

It is hoped that this platform will:

- facilitate increased uptake of standardised, fit-for-purpose on-Country monitoring methods across Indigenous ranger programs
- support improved, consistent monitoring and reporting of bio-cultural values and the environmental condition of the Indigenous Estate
- provide support to Indigenous practitioners to produce and deliver outputs – including reporting – that affirm the exceptional quality and quantity of their on-ground activities. This is essential to ensuring the ongoing support and growth of Indigenous land, water, and sea management programs.

#### Country FILTER



Select a type

Select an area

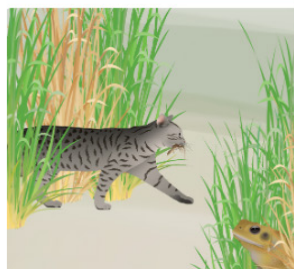
#### Things we CARE about



##### Things we CARE about.

- Native plants and animals
- Native habitats
- Culturally significant species and places
- Threatened species and habitats

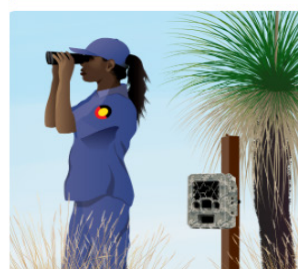
#### Things we WORRY about



##### Things we WORRY about.

- Introduced plants and animals
- Habitat loss and pollution
- Wrong-way fire
- Climate change and extreme weather

#### How we CHECK on things



##### How we CHECK on things.

- Ways to watch, listen, and track
- Using ranger skills, traditional knowledge and technology

Platform tiles that allow practitioners to explore where or what they want to monitor, or the monitoring methods available.

## Monitoring methods

The Monitoring Country platform shares clear, practical monitoring methods for Indigenous rangers, land managers and support staff. It includes background information and step by step guidance for monitoring species, including threatened and culturally significant species, as well as threats and other bio-cultural values.

The platform supports better decision making to help care for Country by:

- hosting a tested 'toolbox' of environmental monitoring methods, tools, and resources, along with guidance on when and how to use them
- ensuring methods, tools, and guidance are fit-for-purpose and culturally appropriate
- providing information in accessible formats - media rich web pages; downloadable, print ready documents; and videos featuring rangers explaining how, why, and when to use specific methods
- sharing examples of successfully established monitoring projects so others can learn from and adapt successful approaches
- providing guidance on data sovereignty and governance, so monitoring data can be stored, managed and analysed over the long term while Indigenous practitioners retain control over how their data is used, guided by FPIC, CARE and FAIR principles
- providing guidance such as on permitting, analysis, reporting, and health and safety obligations.

## Further information

This project is led by Professor Stephen van Leeuwen from Curtin University.

Contact:

[stephen.vanleeuwen@curtin.edu.au](mailto:stephen.vanleeuwen@curtin.edu.au)  
or [nesplandscapes@uwa.edu.au](mailto:nesplandscapes@uwa.edu.au)

For more project information scan the QR code, or visit [monitoringcountry.org.au](http://monitoringcountry.org.au)



**Resilient  
Landscapes**

**National Environmental Science Program**

This project is supported through funding from the Australian Government's National Environmental Science Program (NESP)



Search for @NESPLandscapes to follow us on social media

